

# GRAVIMAX Series Blenders

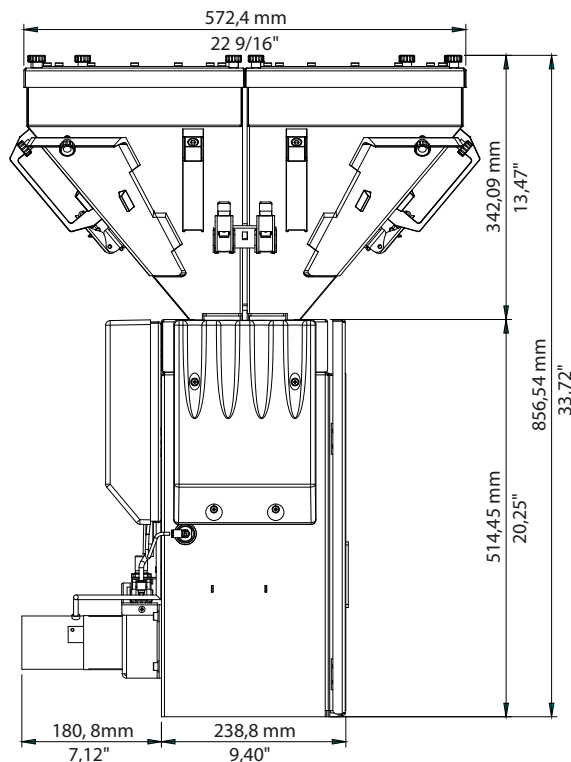
## GRAVIMAX Blender Series 1



GMX B14

### GRAVIMAX Series 1

Batch size	1 kg (2.2 lbs.)
Valve	40 mm (1.6")
Lid prepared for	FEEDMAX 200 Series
Max. number of components	4
Hopper size 1-4	13 l (16.2 lbs.)



## GRAVIMAX Blender Selection

Model	Description	Batch Size		Capacity*	
		kg	lbs.	kg/hr.	lbs./hr.
GMX B14	4 Materials	1	2.2	80	170
GMX B34	4 Materials	3	6.6	200	450
GMX 54	4 Materials	5	11	370	810
GMX 55	5 Materials	5	11	300	660
GMX 56	6 Materials	5	11	270	600
GMX 94	4 Materials	9	20	680	1,490
GMX 95	5 Materials	9	20	540	1,190
GMX 96	6 Materials	9	20	490	1,070
GMX 97	7 Materials	9	20	410	900
GMX 98	8 Materials	9	20	330	720

Model	Description	Batch Size		Capacity*	
		kg	lbs.	kg/hr.	lbs./hr.
GMX 184	4 Materials	18	40	1,500	3,300
GMX 185	5 Materials	18	40	1,200	2,640
GMX 186	6 Materials	18	40	1,060	2,340
GMX 187	7 Materials	18	40	950	2,100
GMX 188	8 Materials	18	40	900	1,980
GMX 274	4 Materials	27	60	1,770	3,900
GMX 275	5 Materials	27	60	1,560	3,420
GMX 276	6 Materials	27	60	1,500	3,300
GMX 277	7 Materials	27	60	1,440	3,180
GMX 278	8 Materials	27	60	1,380	3,060

\* Average values; the actual throughput can vary, and is depending on the respective material.

# Engineered to Be the Ultimate in Precision Blending

## Modularity

Removable material hopper lid c/w cover plate fits prebolted FEEDMAX series hopper loader flange.

## Easy handling

Two handles allow safe easy handling of material hoppers.

## Unique "Clip-on" corner window

Simple "clip-on" corner window provides full view for material inspection and detaches quickly for simpler, easier cleaning access compared to other designs.

## Easy removable

Material hoppers made entirely of wear resistant stainless steel and are equipped with self-locking toggle latches.

## Highest precision

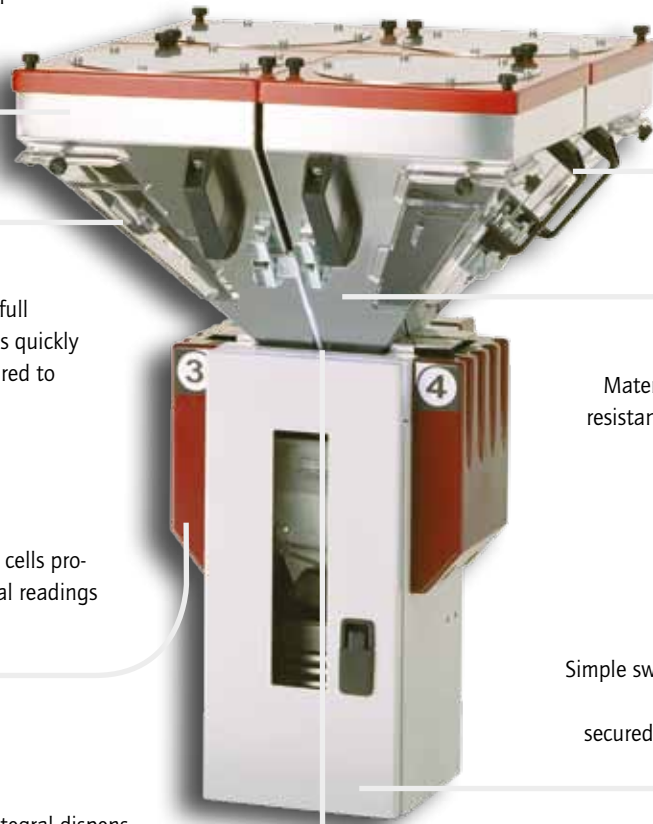
Two independent 24 bit technology load cells provide more precise, noise-free weight signal readings than single load cell systems.

## Ergonomic and dustproof

Simple swing door, opens via quick fastener without using tools. The door is secured by a magnet-coded safety switch.

## Reliable material dispensing valves

Material hoppers with normally closed integral dispensing valves for positive shut-off. The actuating mechanism of the dispensing valve is part of the center body for simple hopper handling without unpractical or unsafe hose or wire connections.



## Advantages of GRAVIMAX Blenders



### Simple operation

- Ingredient values entered as ratio or in % via touch-screen.
- Changing recipes without stopping.
- Material data base, progress display.
- Storage of 100 recipes, inventory reports.
- Preset batch count.



### Highly precise metering valves

Unique flow-valves made from stainless steel for high abrasive wear applications are extremely fast, efficient and consistently reliable. Major ingredients and additives are precisely metered to the desired set point.



### Interchangeable steel hoppers

Self-closing valve mechanism offers easy cleaning and color change. The hopper is specially designed with no flow restricting or bridging parts in the hopper. Two convenient handles allow safe and easy material hopper handling.